

Quality ID #262: Image Confirmation of Successful Excision of Image-Localized Breast Lesion – National Quality Strategy Domain: Patient Safety

2018 OPTIONS FOR INDIVIDUAL MEASURES:

REGISTRY ONLY

MEASURE TYPE:

Process

DESCRIPTION:

Image confirmation of lesion(s) targeted for image guided excisional biopsy or image guided partial mastectomy in patients with nonpalpable, image-detected breast lesion(s). Lesions may include: microcalcifications, mammographic or sonographic mass or architectural distortion, focal suspicious abnormalities on magnetic resonance imaging (MRI) or other breast imaging amenable to localization such as positron emission tomography (PET) mammography, or a biopsy marker demarcating site of confirmed pathology as established by previous core biopsy

INSTRUCTIONS:

This measure is to be submitted **each time** an image guided excisional biopsy or wire localized partial mastectomy is performed in patients with non-palpable, image-detected breast lesions. This measure may be submitted by eligible clinicians who perform the quality actions described in the measure based on the services provided and the measure-specific denominator coding.

Measure Submission:

The listed denominator criteria is used to identify the intended patient population. The numerator options included in this specification are used to submit the quality actions allowed by the measure. The quality-data codes listed do not need to be submitted for registry submissions; however, these codes may be submitted for those registries that utilize claims data.

DENOMINATOR:

Number of patients aged 18 years and older on date of encounter with non-palpable, image-detected (by mammogram, ultrasound, or breast MRI, PET mammography or other imaging modality) breast lesion requiring localization of lesion (benign or malignant) for targeted resection (either excisional biopsy or partial mastectomy)

Denominator Criteria (Eligible Cases):

Patients aged ≥ 18 years on date on encounter

AND

Diagnosis for Breast Lesion (ICD-10-CM): C50.011, C50.012, C50.019, C50.021, C50.022, C50.029, C50.111, C50.112, C50.119, C50.121, C50.122, C50.129, C50.211, C50.212, C50.219, C50.221, C50.222, C50.229, C50.311, C50.312, C50.319, C50.321, C50.322, C50.329, C50.411, C50.412, C50.419, C50.421, C50.422, C50.429, C50.511, C50.512, C50.519, C50.521, C50.522, C50.529, C50.611, C50.612, C50.619, C50.621, C50.622, C50.629, C50.811, C50.812, C50.819, C50.821, C50.822, C50.829, C50.911, C50.912, C50.919, C50.921, C50.922, C50.929, C79.81, D05.01, D05.02, D05.11, D05.12, D24.1, D24.2, D24.9, D48.61, D48.62, D49.3, N60.01, N60.02, N60.09, N60.11, N60.12, N60.19, N60.21, N60.22, N60.29, N60.31, N60.32, N60.39, N60.41, N60.42, N60.49, N60.81, N60.82, N60.89, N60.91, N60.92, N60.99, N61.0, N61.1, N62, N63.0, N63.10, N63.11, N63.12, N63.13, N63.14, N63.20, N63.21, N63.22, N63.23, N63.24, N63.31, N63.32, N63.41, N64.0, N64.1, N64.2, N64.3, N64.4, N64.51, N64.52, N64.53, N64.59, N64.81, N64.82, N64.89, N64.9, R92.0, R92.1, R92.2, R92.8, T85.44XA, T85.44XD, T85.44XS

AND

Patient encounter during the performance period (CPT): 19125, 19301, 19302

AND NOT

DENOMINATOR EXCLUSION:

Patients with needle localization specimens which are not amenable to intraoperative imaging such as MRI needle wire localization, or targets which are tentatively identified on mammogram or ultrasound

which do not contain a biopsy marker but which can be verified on intraoperative inspection or pathology (e.g., needle biopsy site where the biopsy marker is remote from the actual biopsy site):
G8873

NUMERATOR:

Patients undergoing excisional biopsy or partial mastectomy of a non-palpable lesion whose excised breast tissue was evaluated by imaging (x-ray, ultrasound, MRI, PET mammography or other imaging modality) intraoperatively to confirm successful inclusion of targeted lesion

Numerator Options:

Performance Met:

Excised tissue evaluated by imaging intraoperatively to confirm successful inclusion of targeted lesion **(G8872)**

OR

Performance Not Met:

Excised tissue not evaluated by imaging intraoperatively to confirm successful inclusion of targeted lesion, reason not given **(G8874)**

RATIONALE:

Many benign breast lesions and breast cancers are image-detected and will involve some form of image localization. Specimen radiography or specimen ultrasonography should routinely be performed for all excisions of image-detected abnormalities to document success of the procedure in excising the target.

CLINICAL RECOMMENDATION STATEMENTS:

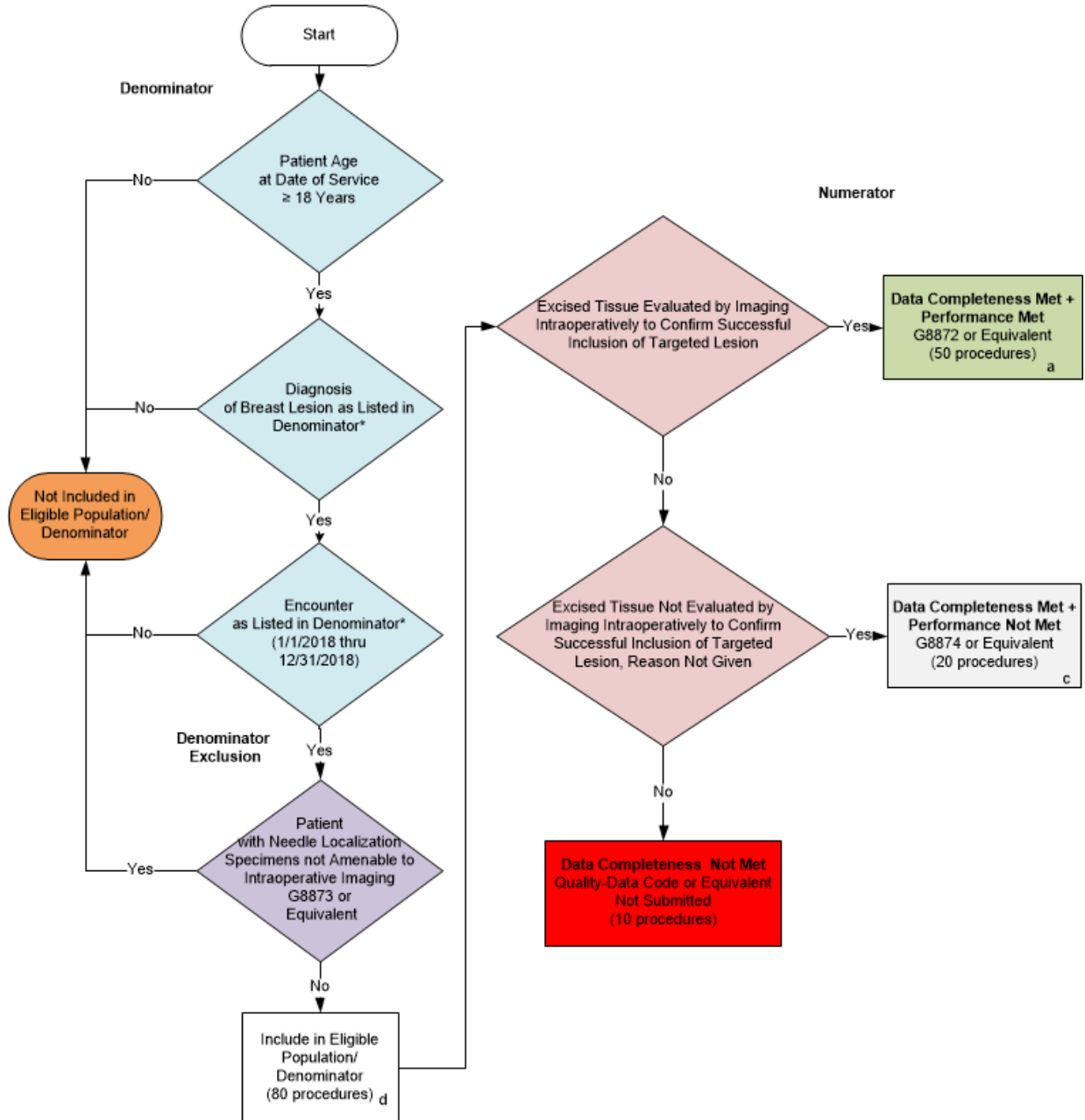
Specimen radiography or specimen ultrasonography should be routinely performed for all excisions of image-detected abnormalities to help document the success of the procedure in finding the target. Specimen radiography should use two 90-degree orthogonal views. (The American Society of Breast Surgeons, 2001)

COPYRIGHT:

This measure is owned by The American Society of Breast Surgeons.

THESE MEASURES AND SPECIFICATIONS ARE PROVIDED "AS IS" WITHOUT WARRANTY OF ANY KIND.

**2018 Registry Flow for Quality ID #262:
Image Confirmation of Successful Excision of Image-Localized Breast Lesion**



SAMPLE CALCULATIONS:

Data Completeness=

$$\frac{\text{Performance Met (a=50 procedures)} + \text{Performance Not Met (c=20 procedures)}}{\text{Eligible Population / Denominator (d=80 procedures)}} = \frac{70 \text{ procedures}}{80 \text{ procedures}} = 87.50\%$$

Performance Rate=

$$\frac{\text{Performance Met (a=50 procedures)}}{\text{Data Completeness Numerator (70 procedures)}} = \frac{50 \text{ procedures}}{70 \text{ procedures}} = 71.43\%$$

*See the posted Measure Specification for specific coding and instructions to submit this measure
 NOTE: Submission Frequency- Procedure

CPT only copyright 2017 American Medical Association. All rights reserved.
 The measure diagrams were developed by CMS as a supplemental resource to be used in conjunction with the measure specifications. They should not be used alone or as a substitution for the measure specification.

2018 Registry Flow for Quality ID

#262: Image Confirmation of Successful Excision of Image-Localized Breast Lesion

Please refer to the specific section of the Measure Specification to identify the denominator and numerator information for use in submitting this Individual Specification. This flow is for registry data submission.

1. Start with Denominator
2. Check Patient Age:
 - a. If the Age is greater than or equal to 18 years of age on date of service and equals No during the measurement period, do not include in Eligible Patient Population. Stop Processing.
 - b. If the Age is greater than or equal to 18 years of age on date of service and equals Yes during the measurement period, proceed to check Patient Diagnosis.
3. Check Patient Diagnosis:
 - a. If Diagnosis of Breast Lesion as Listed in the Denominator equals No, do not include in Eligible Patient Population. Stop Processing.
 - b. If Diagnosis of Breast Lesion as Listed in the Denominator equals Yes, proceed to check Encounter Performed.
4. Check Encounter Performed:
 - a. If Encounter as Listed in the Denominator equals No, do not include in Eligible Patient Population. Stop Processing.
 - b. If Encounter as Listed in the Denominator equals Yes, proceed to Denominator Exclusion.
5. Check Denominator Exclusion:
 - a. If Denominator Exclusion as listed equals Yes, do not include in Eligible Denominator Patient Population. Stop Processing.
 - b. If Denominator Exclusion as listed equals No, include in Eligible Population.
6. Denominator Population:
 - a. Denominator Population is all Eligible Patients in the denominator. Denominator is represented as Denominator in the Sample Calculation listed at the end of this document. Letter d equals 80 procedures in the Sample Calculation.
7. Start Numerator
8. Check Excised Tissue Evaluated by Imaging Intraoperatively to Confirm Successful Inclusion of Targeted Lesion:
 - a. If Excised Tissue Evaluated by Imaging Intraoperatively to Confirm Successful Inclusion of Targeted Lesion equals Yes, include in Data Completeness Met and Performance Met.
 - b. Data Completeness Met and Performance Met letter is represented in the Data Completeness and Performance Rate in the Sample Calculation listed at the end of this document. Letter a equals 50 procedures in the Sample Calculation.

- c. If Excised Tissue Evaluated by Imaging Intraoperatively to Confirm Successful Inclusion of Targeted Lesion equals No, proceed to Excised Tissue Not Evaluated by Imaging Intraoperatively to Confirm Successful Inclusion of Targeted Lesion Reason Not Given.
9. Check Excised Tissue Not Evaluated by Imaging Intraoperatively to Confirm Successful Inclusion of Targeted Lesion Reason Not Given:
- a. If Excised Tissue Not Evaluated by Imaging Intraoperatively to Confirm Successful Inclusion of Targeted Lesion. Reason Not Given equals Yes, include in the Data Completeness Met and Performance Not Met.
 - b. Data Completeness Met and Performance Not Met letter is represented in the Data Completeness in the Sample Calculation listed at the end of this document. Letter c equals 20 procedures in the Sample Calculation.
 - c. If Excised Tissue Not Evaluated by Imaging Intraoperatively to Confirm Successful Inclusion of Targeted Lesion Reason Not Given equals No, proceed to Data Completeness Not Met.
10. Check Data Completeness Not Met
- a. If Data Completeness Not Met equals No, Quality Data Code or equivalent not submitted. 10 procedures have been subtracted from Data Completeness Numerator in the Sample Calculation.

SAMPLE CALCULATIONS:

Data Completeness=

$$\frac{\text{Performance Met (a=50 procedures) + Performance Not Met (c=20 procedures)}}{\text{Eligible Population / Denominator (d=80 procedures)}} = \frac{70 \text{ procedures}}{80 \text{ procedures}} = 87.50\%$$

Performance Rate=

$$\frac{\text{Performance Met (a=50 procedures)}}{\text{Data Completeness Numerator (70 procedures)}} = \frac{50 \text{ procedures}}{70 \text{ procedures}} = 71.43\%$$